



GMT MONTHLY MEMBERSHIP PROGRESS REPORT

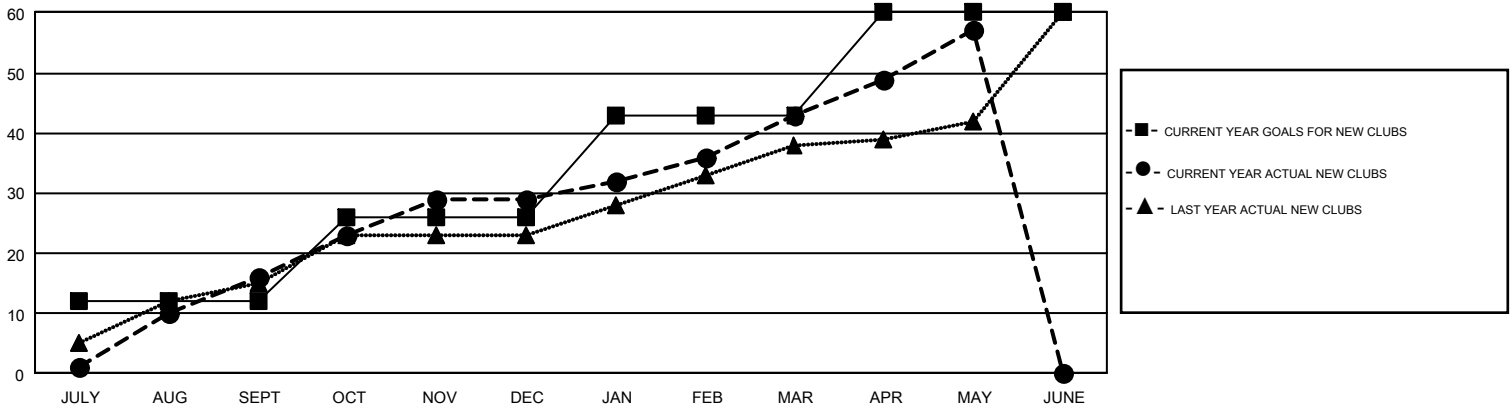
Results as of: 5/31/2017

GMT Constitutional Area 7

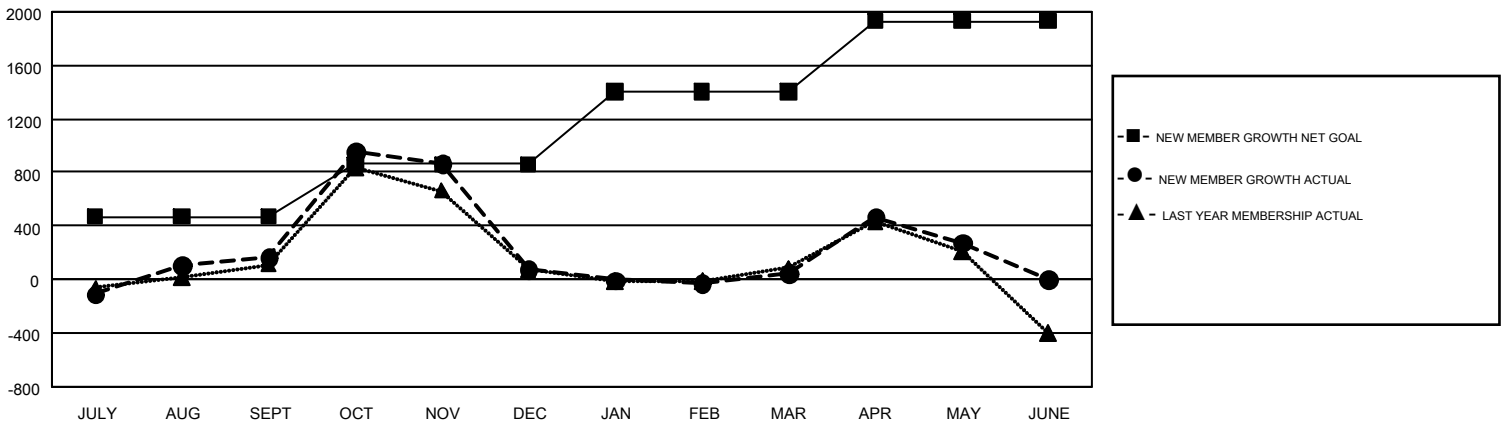
REPORT DOES NOT INCLUDE CLUBS IN UNDISTRICTED AREAS.

Clubs				Members			
RESULTS FOR 2016-2017				RESULTS FOR 2016-2017			
QUARTER	NEW CLUB GOAL	NEW CLUBS	DROPPED CLUBS	QUARTER	NEW MEMBER GROWTH NET GOAL (not reinstated or transfers)	NEW MEMBER GROWTH ACTUAL (not reinstated or transfers)	DROPPED MEMBERS ACTUAL (including transfers)
JULY/AUG/SEPT	12	16	8	JULY/AUG/SEPT	471	1,654	1,488
OCT/NOV/DEC	14	13	14	OCT/NOV/DEC	390	1,832	1,923
JAN/FEB/MAR	17	14	6	JAN/FEB/MAR	542	1,232	1,261
APR/MAY/JUNE	17	14	4	APR/MAY/JUNE	530	1,450	1,220

GOALS AND ACTUAL NEW CLUBS CUMULATIVE



GOALS AND ACTUAL MEMBERS CUMULATIVE



DROPPED CLUBS: 32	1,294 CLUBS OF 1,945 ADDED 1 OR MORE NEW MEMBERS	GENDER DISTRIBUTION
DROPPED MEMBERS		MALE 28,972 (63.31%)
DECEASED 477		FEMALE 16,793 (36.69%)
CLUB CANCELLED 189	CLICK HERE FOR CUMULATIVE MEMBERSHIP DATA	TOTAL FAMILY UNIT MEMBERS 7,410
OTHER 5,226		FAMILY MEMBERS PAYING HALF DUES 3,832
TOTAL 5,892		